



Developer :



Project By :



Architect : **SHAPERS 360**

Contact :

Raj Patel +91 99099 31250

Jayneel Patel +91 96380 47047

Email :

rgp4518@gmail.com

Site Address :

Shikshapatri Villa,

Near Shikshapatri Bungalows,

Behind Kanbha Bus Stand,

Kanbha - Kunjad Road,

Kanbha Gam, Ahmedabad - 382430





शिक्षापत्री
विला

|| We Are Life Changers ||









Beautiful Places To Live

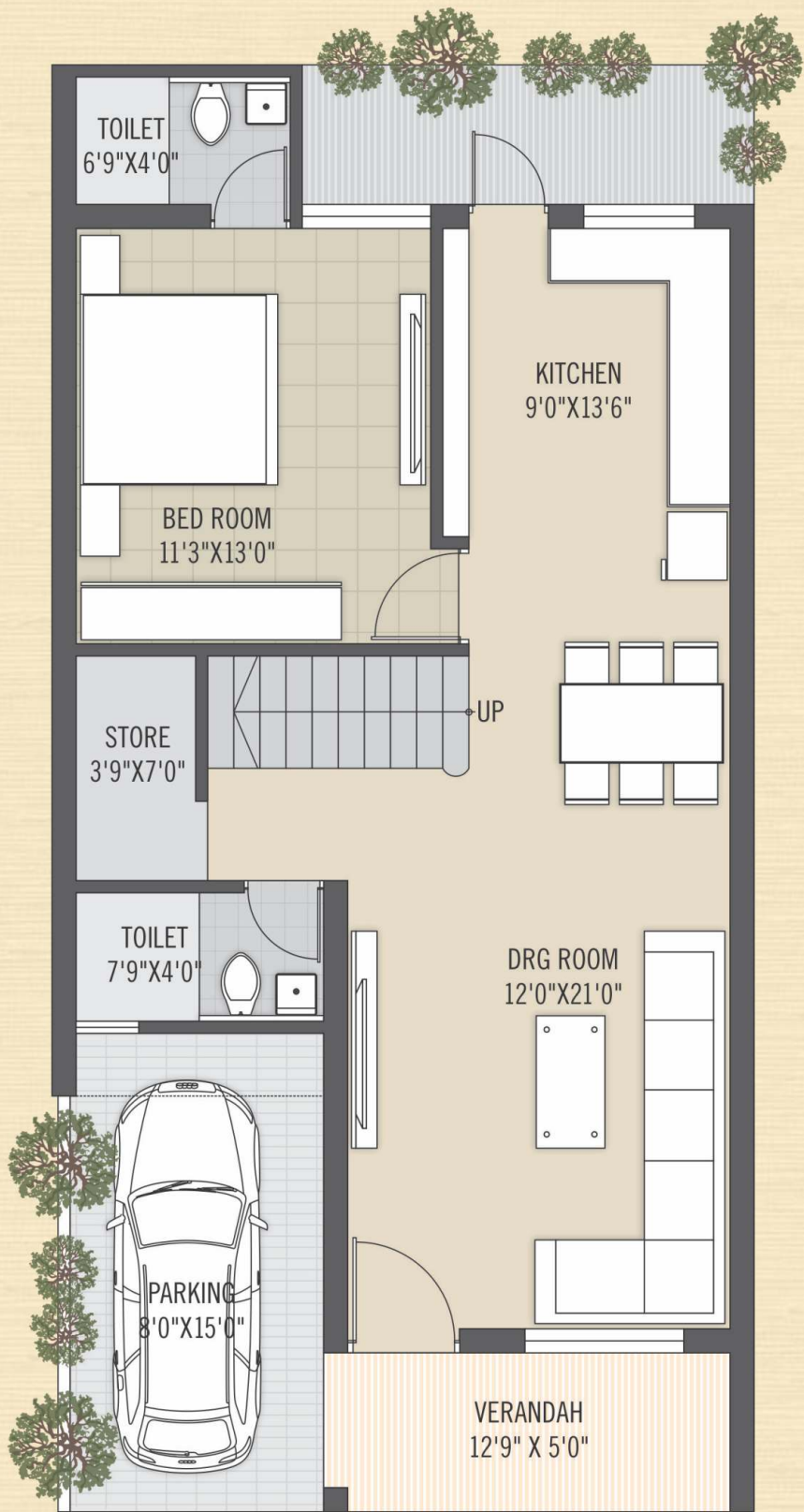




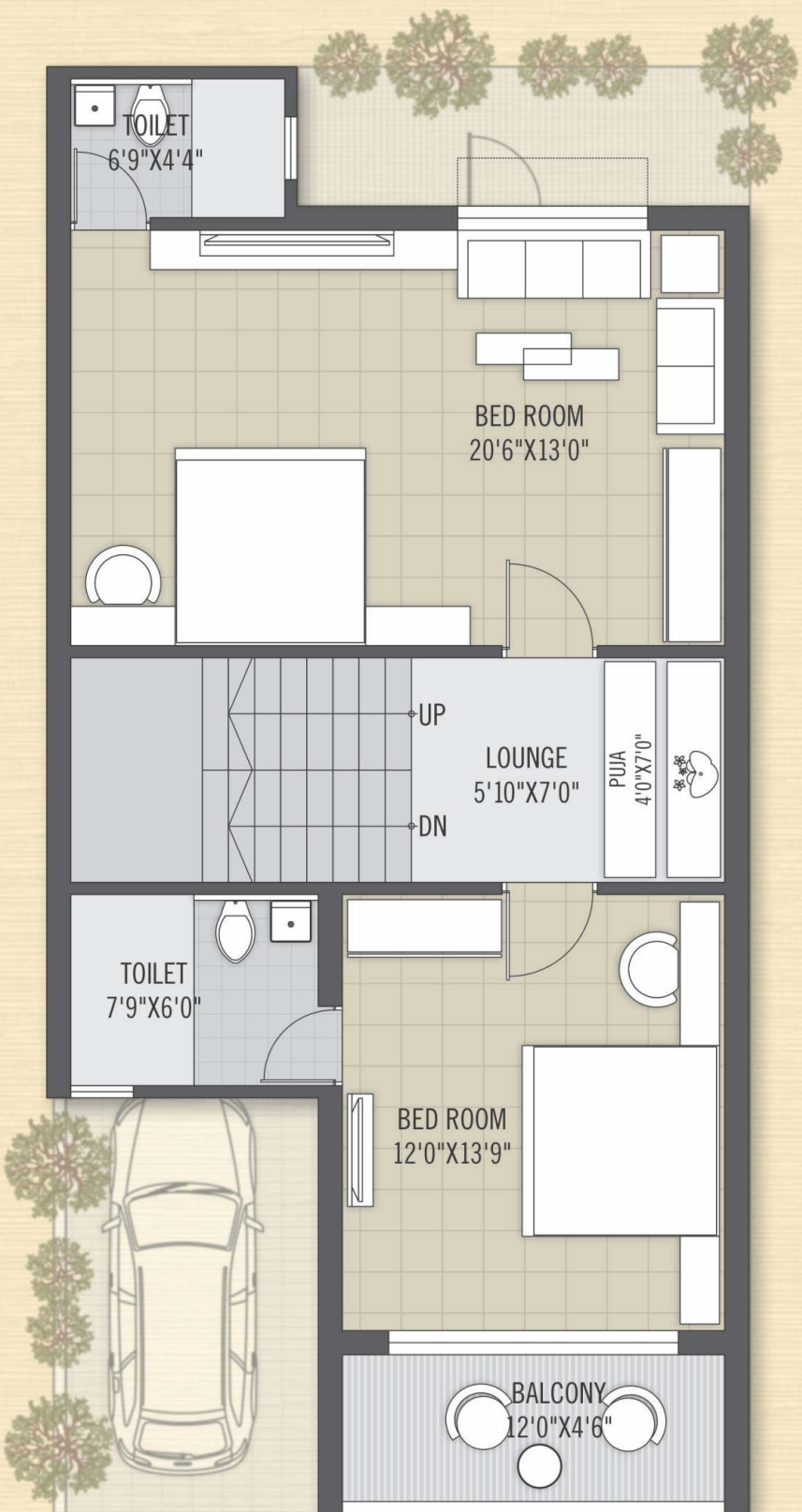
LAYOUT PLAN



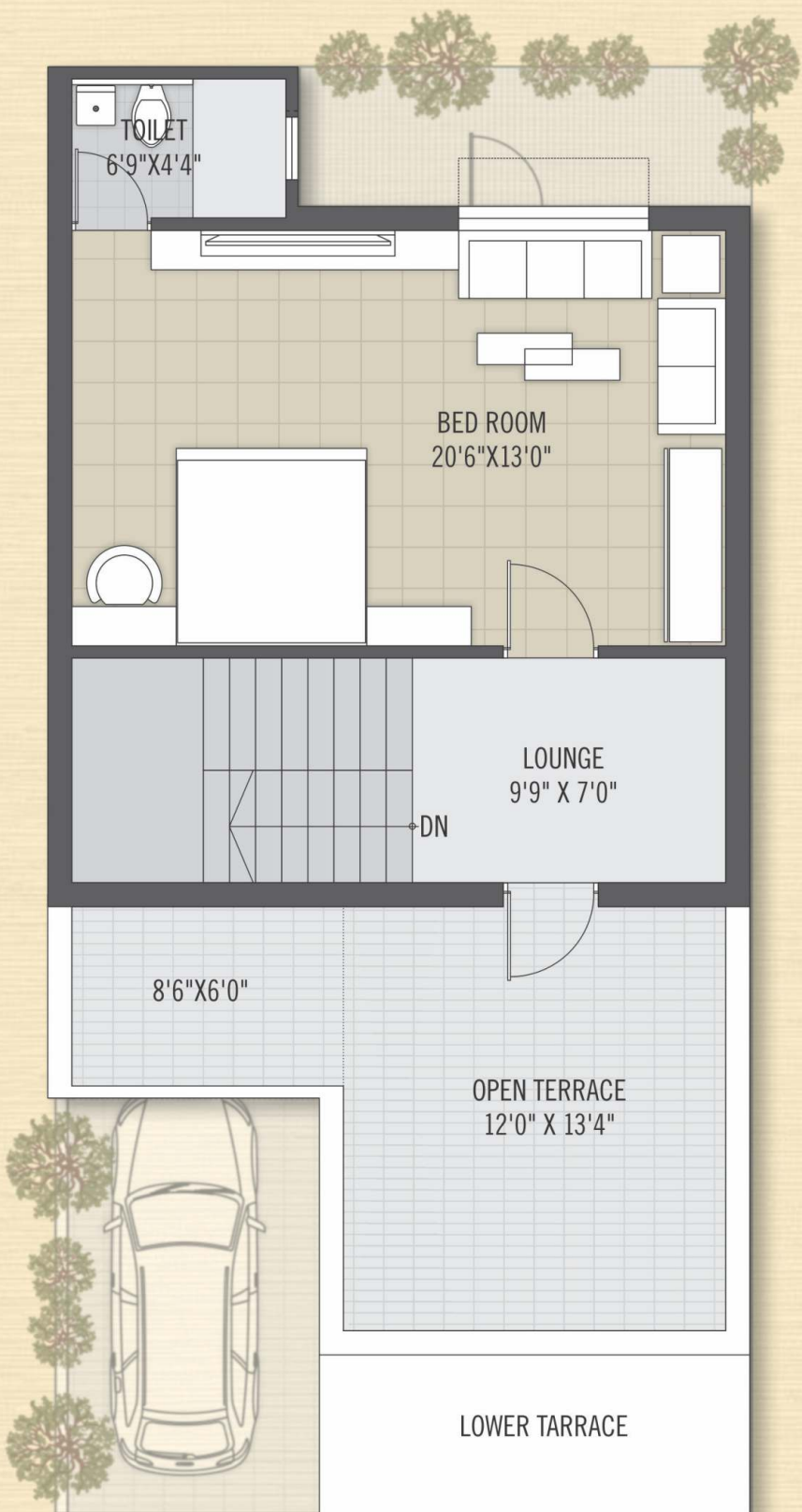
UNIT PLAN



GROUND FLOOR PLAN



FIRST FLOOR PLAN



SECOND FLOOR PLAN

AMENITIES



Heritage Gate



Heritage Light Poles



Landscaped Garden
with Gazebo



Club House
with Gym Lounge



3 Phase Power Supply



24 Hours Water Supply
with Pressure System

Disclaimer :

Internal Changes Shall Be allowed with prior permission and shall be charged extra in advance.

All rights are reserved by developers to make any change in plan, Elevation and other details therein to comply with statutory regulation; this shall be binding on to all the members.

Legal , GEB , Auda , maintenance and Service tax to be borne by the members.

Basic rates as per agreement.

Changes in external elevation shall not be permitted.

This brochure shall not be treated as an official document ; it is only for information.

SPECIFICATIONS

FLOORING



Vitrified flooring to all area.

WINDOWS



Fully glazed powder coating sliding windows with granite frames.

DOORS



Decorative main doors with branded lock.
All other are flush doors with wooden frame and granite sills.

ELECTRIFICATION



Copper concealed wiring with ISI approved wire and branded modular accessories with MCB circuits.

TOILETS



All European style toilets with ceramic/glazed tiles dado up to lintel level with branded CP fittings & sanitary. Granite door frame and flush door to all toilets.

KITCHEN



Granite-Marble composite platforms with branded SS sink and glazed tiles dado up to lintel level. Store is finished with marble self.

FINISH



External: Double coat sand faced with good quality acrylic paint.
Internal: Mala plaster with cement based white putty finish.

LOCATION PLAN

